

Lesson 9

Common Notation and Music Theory

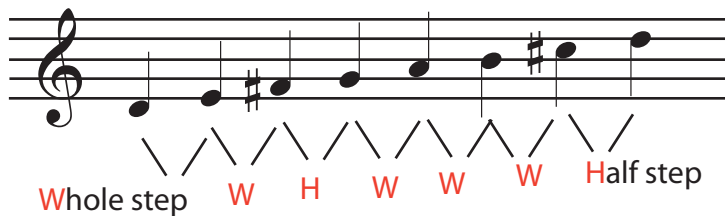


All of these B's are flat because of the key signature.

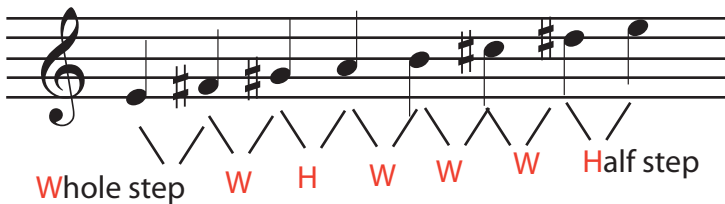
The **Key Signature*** is the sharps and flats that appear at the beginning of each staff. They apply to **all notes with that name** unless there is an accidental. The key signature tells you **what scale and key** you are using for this piece.

Remember that all the natural notes in a row is the C major scale. Any row with that **same pattern of half steps and whole steps** is also a **major scale**,[^] but each has a different set of notes.

Many pieces are in a major key; they tend to use the notes of a particularly major scale.

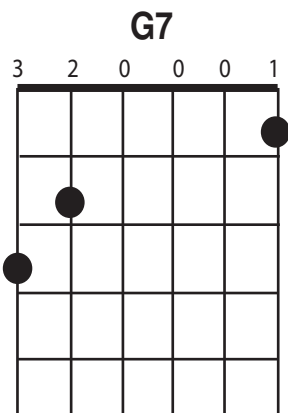


Key of D major



Key of E major

Playing Chords



When playing a bass note-strum accompaniment:

The first bass note you should pick is the one that names the chord.



*learn more about key signature: <http://cnx.org/content/m10881/latest/>

^learn more about major keys and scales: <http://cnx.org/content/m10851/latest/>